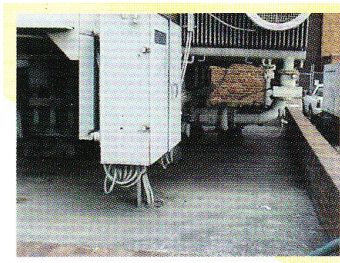


# Polyurea Containment Linings for the Mining/Industrial/Civil/Marine Industries

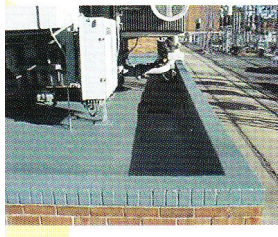
- Repair damaged & leaking bunds with this unique spray on bund linings solution
- Provides seamless protection against impact, corrosion & chemical attack
- Create impervious bunded areas on earthen substrates in remote areas
- Outstanding chemical resistance makes it suitable for a wide range of chemicals
- Can be applied over dirt with the use of a geotextile material
- Australia wide network of Qualified Application Technicians

## Electrical Transformer Bund



← Before

After →



## Ideal for:

- Mining & remote area bunding
- Transformer bunding
- Lining Primary Containers
- Indoor & Outdoor Chemical Bunds
- Large & small scale hydrocarbon bunds
- High Traffic areas
- Underground chemical containment pits

## Class 8 Corrosives Storage Areas



← Application of Polyurea

Completed Sodium

Hypochlorite Bund →



## Features:

- Use on steel, fibreglass, concrete, wood & rubber
- Excellent resistance to thermal shock & excellent flexibility
- Variable Thickness
- Dries 3-5 secs, fast cure & can support foot traffic in minutes
- Potable water approved systems
- Resistant to many solvents, acids & corrosive compounds
- No VOC's or Solvents

## Completed Large chemical storage areas



**BLAST IT CLEAN IT PAINT IT**

Phone: (02) 9659-4611

Fax: (02) 9659-4622

E-Mail: [bcp1@bigpond.net.au](mailto:bcp1@bigpond.net.au)

Mobile: 0414-999-600

**ON TIME**

**ON SITE ON BUDGET**